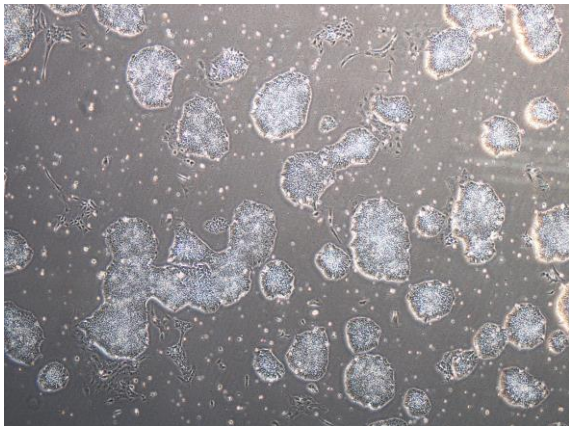
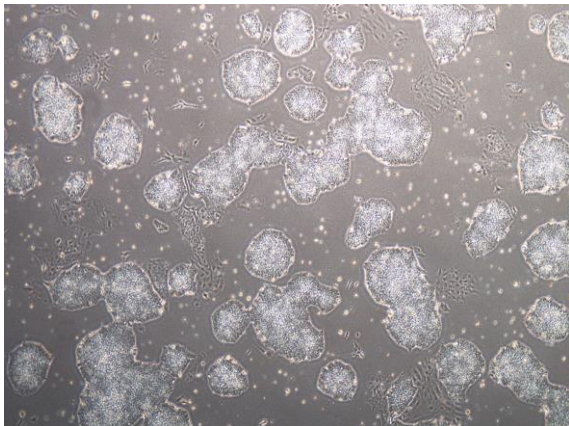


【 CiRA-j-1155 】 Morphology of iPSC colonies

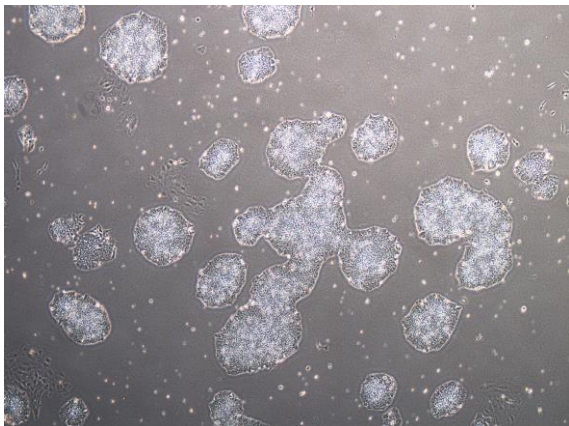
CiRA-j-1155-A: passage-2



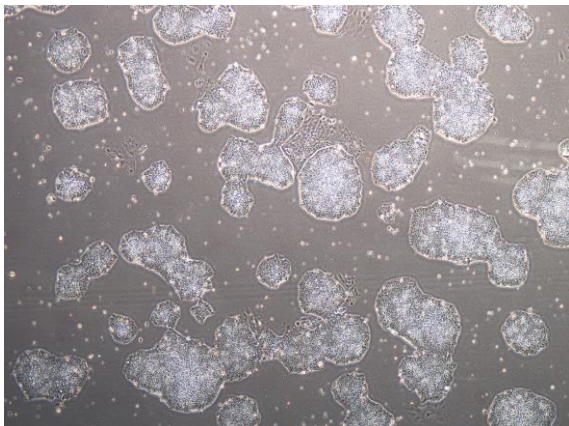
CiRA-j-1155-B: passage-2



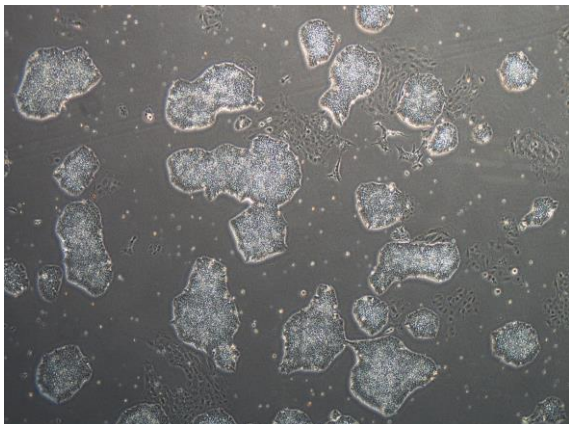
CiRA-j-1155-C: passage-2



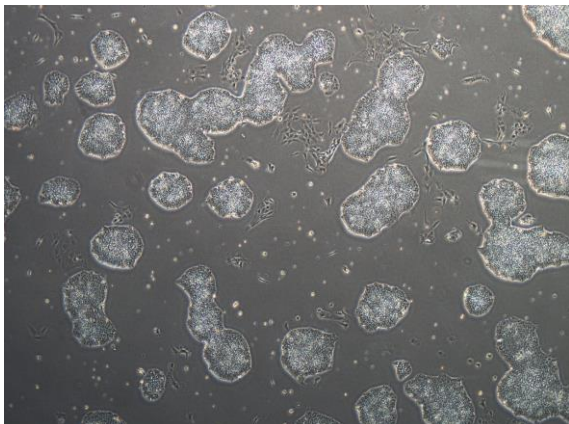
CiRA-j-1155-D: passage-2



CiRA-j-1155-E: passage-2



CiRA-j-1155-F: passage-2



(All images were captured at 4x magnification)